

Post Award Support

ABOUT THE INSTITUTE FOR HEALTH DISCOVERY AND INNOVATION

The Institute for Health Discovery and Innovation (IHDI) at the University of Galway is an interdisciplinary, cross college, Institute focused on supporting high quality research activity across the domains of health discovery and innovation research. The Institute's mission is to advance fundamental and applied understanding of disease and drive innovative health solutions. Its vision is to be a world-leading centre for health discovery and innovation through excellence in research, people and partnerships. The Institute prioritises developing talent and fostering internal and external collaboration. The Institute's thematic structure includes three pillars:

1. Fundamental Discovery
2. Enabling Technologies and Innovation
3. Health-Based Challenges

POST AWARD SUPPORT/ VALUE PROPOSITION

Post-Award support offers comprehensive assistance to help research teams **manage administrative and operational requirements** with clarity and ease. This includes guidance on **data protection** and **ethics submissions**, **coordinated project management** for kick-off meetings, planning, and progress tracking, as well as **end-to-end help with recruitment activities**. Operational workflows are strengthened through **close collaboration with central university offices**—including Legal, Insurance, Procurement, Innovation (IP), and clinical or regulatory units—to ensure processes are aligned and efficient.

DESCRIPTION OF RESEARCH PROGRAMME

The Marie Skłodowska- Curie Actions (MSCA) Doctoral Networks provide high-quality international doctoral training that builds creative, innovative, and employable researchers. They unite academic and industry partners to offer advanced research, interdisciplinary mobility, and structured skills development across sectors.

SELECTED KEY OUTCOMES

- 1 DPIA completed 7 months in advance of research starting
- 2 Ethics and external ethical advisor successfully secured
- 3 Recruitment of shared Programme Manager
Recruitment of Doctoral Candidates
- 4 Coordination of Press Release
Set up of Programme Website
- 5 Assisted with Project Kick-off meeting

MEET THE INVESTIGATOR

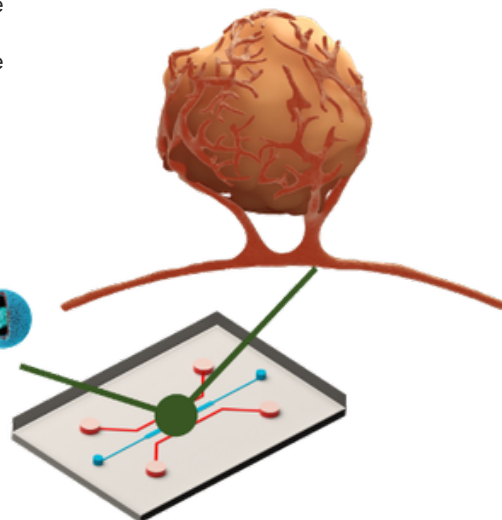
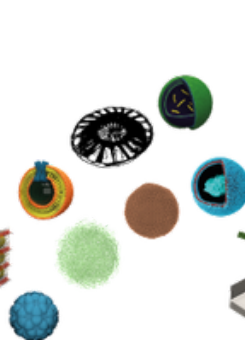
Dr Mihai Lomora is an Assistant Professor of (Bio)material Chemistry in the School of Biological and Chemical Sciences, a Research Ireland CÚRAM Funded Investigator, and an active member of the Institute for Health Discovery and Innovation at the University of Galway. Mihai leads the CerebroMachines Lab, which focuses on the (bio)engineering and integration of therapeutic drug delivery systems with brain and organ-on-chip platforms that act as miniature, realistic models of human tissues.



RESEARCH ACTIVITY

CerebroMachinesTrain Doctoral Network (CMT-DN) will train 14 PhD researchers across 9 countries, focusing on the development of tiny machines (TMs) for advanced drug delivery to the brain. These TMs are engineered to:

- Deliver precise doses of therapeutic substances to targeted brain areas
- Maintain functionality under changing body conditions
- Improve the absorption of a drug in the body
- Minimise side effects and preserve healthy tissue



The project uses advanced brain-on-a-chip systems—simple “mini-brain models” grown in the lab—to test new treatments without using animals, making research faster and cheaper. Through CMT-DN, universities and industry train researchers in next-generation brain technologies and safer, more realistic ways to test therapies for diseases affecting the brain's blood vessels.

IHDI SUPPORT

- Post award setup, including legal review, insurance, IP, and overall grant activation support
- Compliance and governance assistance across ethics, data protection, and HR (job description development and project management)
- Communications and visibility support through coordinated press releases and website development
- Project initiation support, including preparation and facilitation of kick-off meetings
- Active engagement with central university offices to align processes, avoid duplication, and ensure seamless coordination of responsibilities including ethics and DPIA applications

TESTIMONIAL

Undoubtedly, coordinating a consortium of this scale involves a significant administrative burden. Beyond maintaining active communication across multiple partners and institutions, effectively navigating local support services is equally essential. The support I received from IHDI has been instrumental in easing this burden. It has allowed me to focus on higher-quality decision-making and research focus rather than becoming bogged down in administrative complexities. I am deeply grateful for this support and would highly recommend it to anyone seeking efficient, reliable assistance with managing complex projects.

Dr Mihai Lomora
CMT-DN Project Lead

