



OLLSCOIL NA GAILLIMHE
UNIVERSITY OF GALWAY

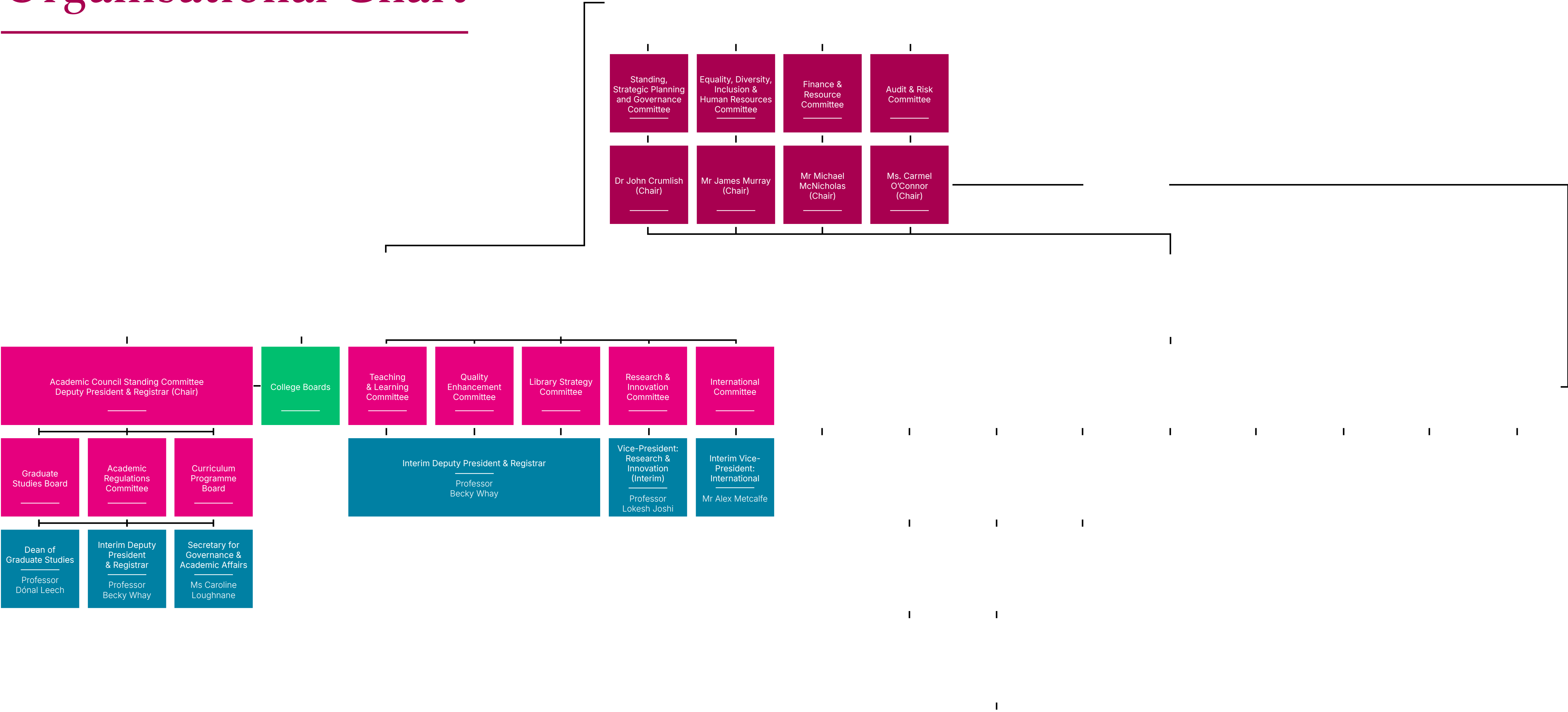
Organisational Chart

Overview of key structures,
roles and functions.

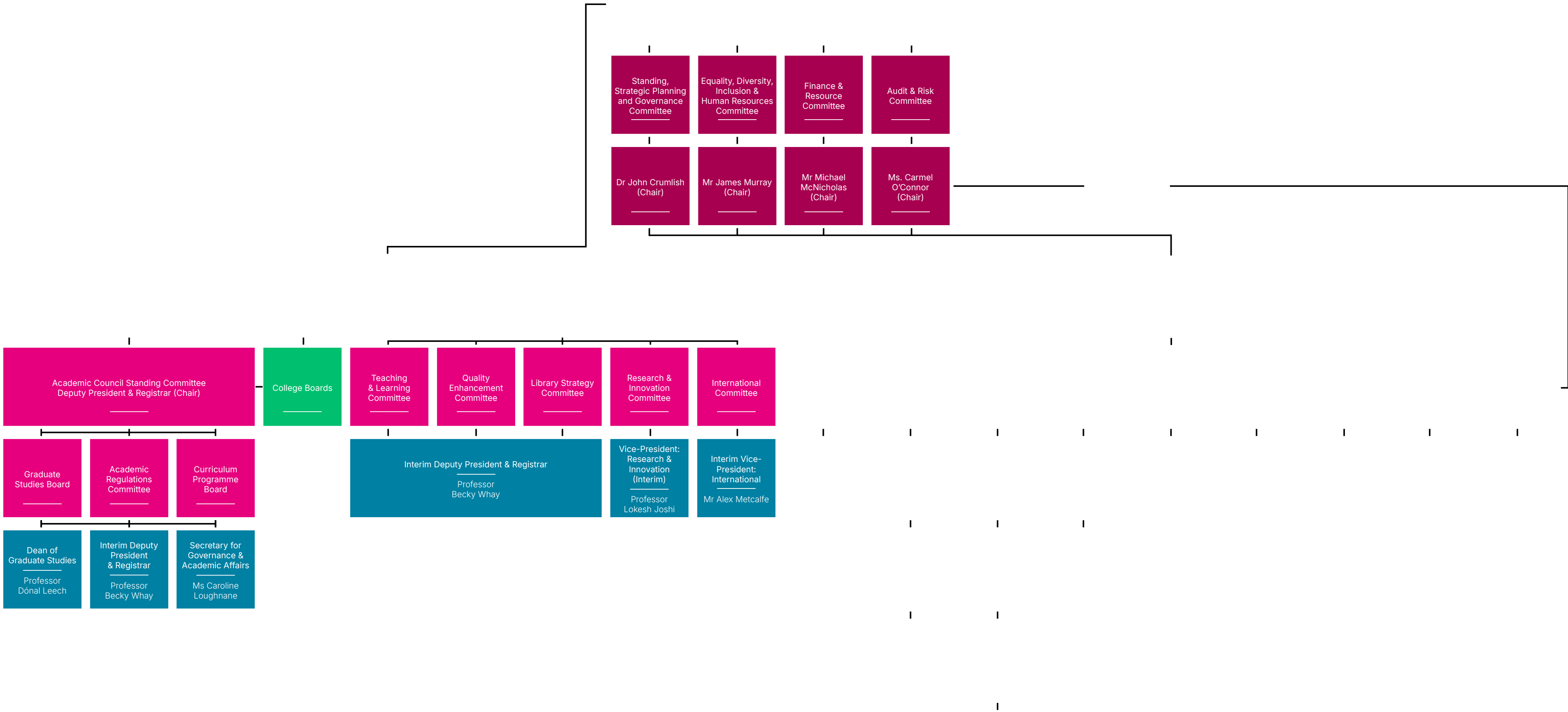
Information updated in March 2025 by the Office of
the Secretary for Governance and Academic Affairs



Organisational Chart



Organisational Chart



President / Chief Officer

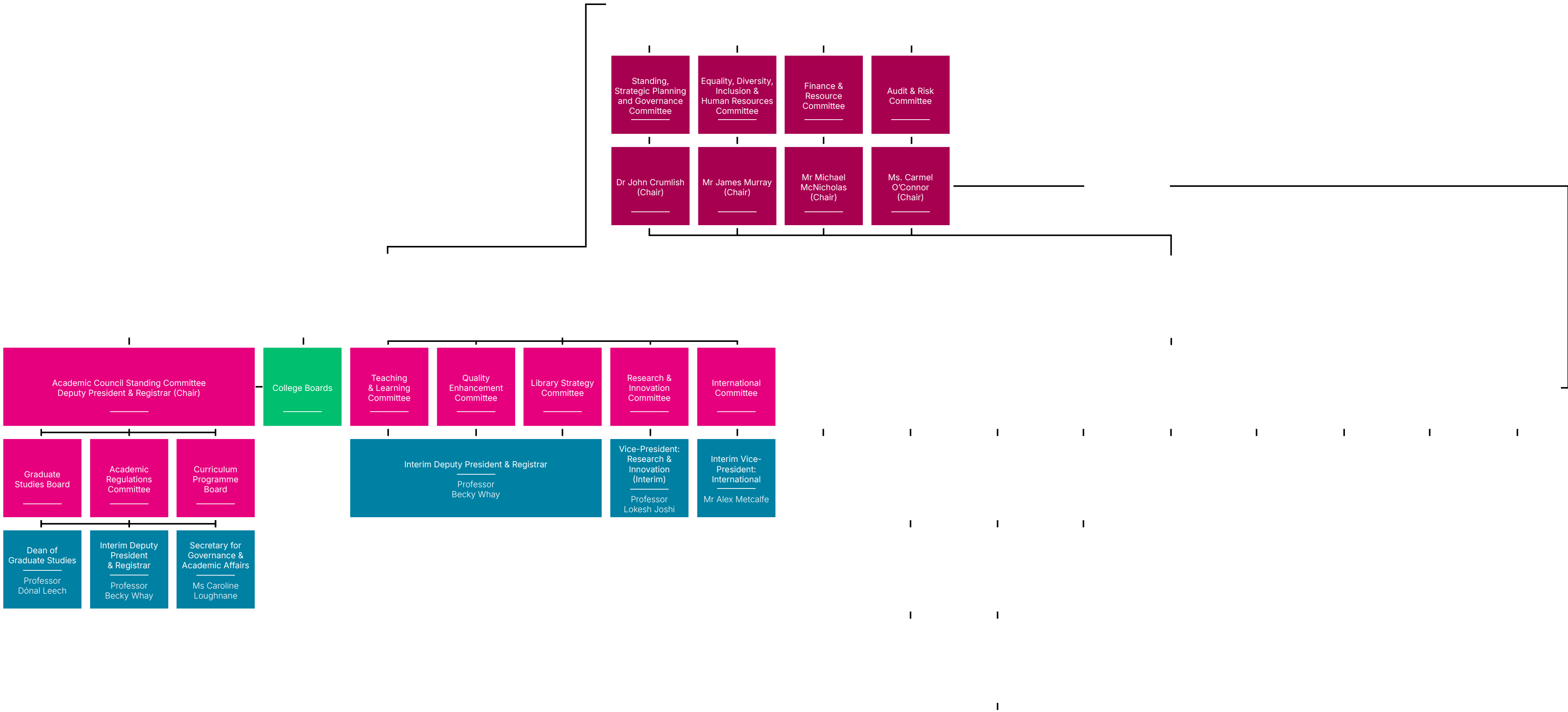
Areas of Responsibility

Leading the University Management Team and managing and directing the University in its academic, administrative, financial, personnel and other activities.

Direct Reports/ Heads of Areas

- Director, Planning and Administration, Office of the President
- Director of Strategy Implementation
- Deputy President & Registrar
- Vice-President: Marketing, Communications & Engagement
- Vice-President: Equality, Diversity & Inclusion
- Vice-President: International
- Vice-President: Research & Innovation
- Secretary for Governance & Academic Affairs
- Bursar/Chief Financial Officer
- Chief Operating Officer
- Executive Dean: College of Arts, Social Sciences and Celtic Studies
- Executive Dean: College of Business, Public Policy & Law
- Executive Dean: College of Medicine, Nursing & Health Sciences
- Executive Dean: College of Science and Engineering
- Director of Human Resources
- Director of Internal Audit
- Dean of Students
- Director of Development & Alumni Relations

Organisational Chart



Deputy President & Registrar

Areas of Responsibility

Deputy to the President with responsibility for Academic Strategy, including all aspects of teaching and learning, the Academic Promotion and Progression Schemes, as well as the Sustainability Strategy, Irish Language Strategy, Brexit and the University Quality Office.

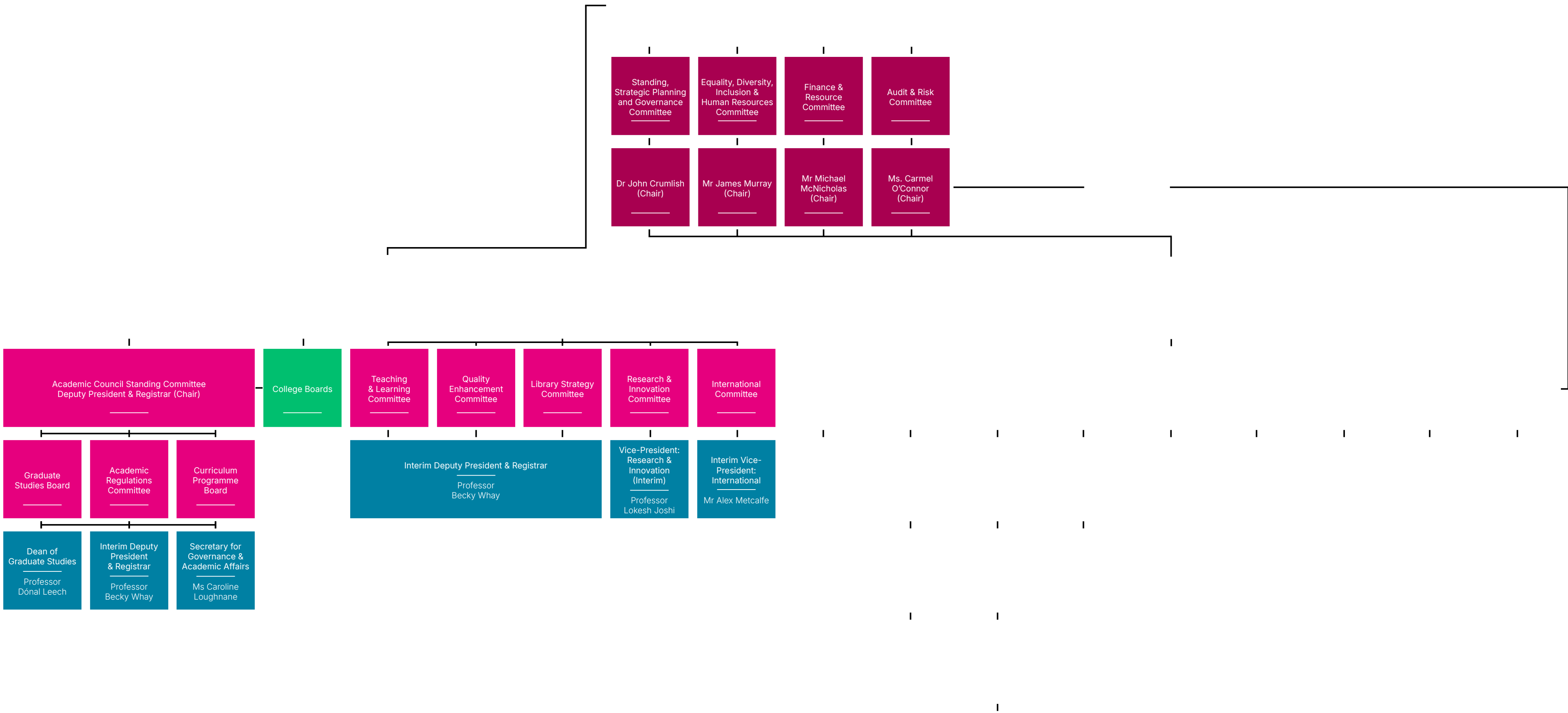
Is responsible, in conjunction with the Vice-President for Research & Innovation, for the development of research across the University.

Chairs the University's Teaching and Learning Committee, Academic Standing Committee, the Academic Promotions Committee, the Library Strategy Committee, Sustainability Advisory Board, and the Quality Enhancement Committee.

Direct Reports/ Heads of Areas

- University Librarian
- Director of Centre for Excellence in Learning and Teaching
- Director of Centre for Adult Learning and Professional Development
- Head of Strategic Projects in the Office of the Deputy President & Registrar
- Director of Quality
- Director of Sustainability
- Oifigeach na Gaeilge
- English Language Centre Manager
- Director of Marketing and Communications
- Head of Content
- Head of Engagement
- Director of Administration and Finance/ Board Secretary for Galway University Foundation
- Internal Communications Officer
- Regional Skills Advisor

Organisational Chart



Dean of Students

Areas of Responsibility

Responsibility for ensuring that the university structures, environment and student services enhance the student experience, supporting the educational and personal development of students.

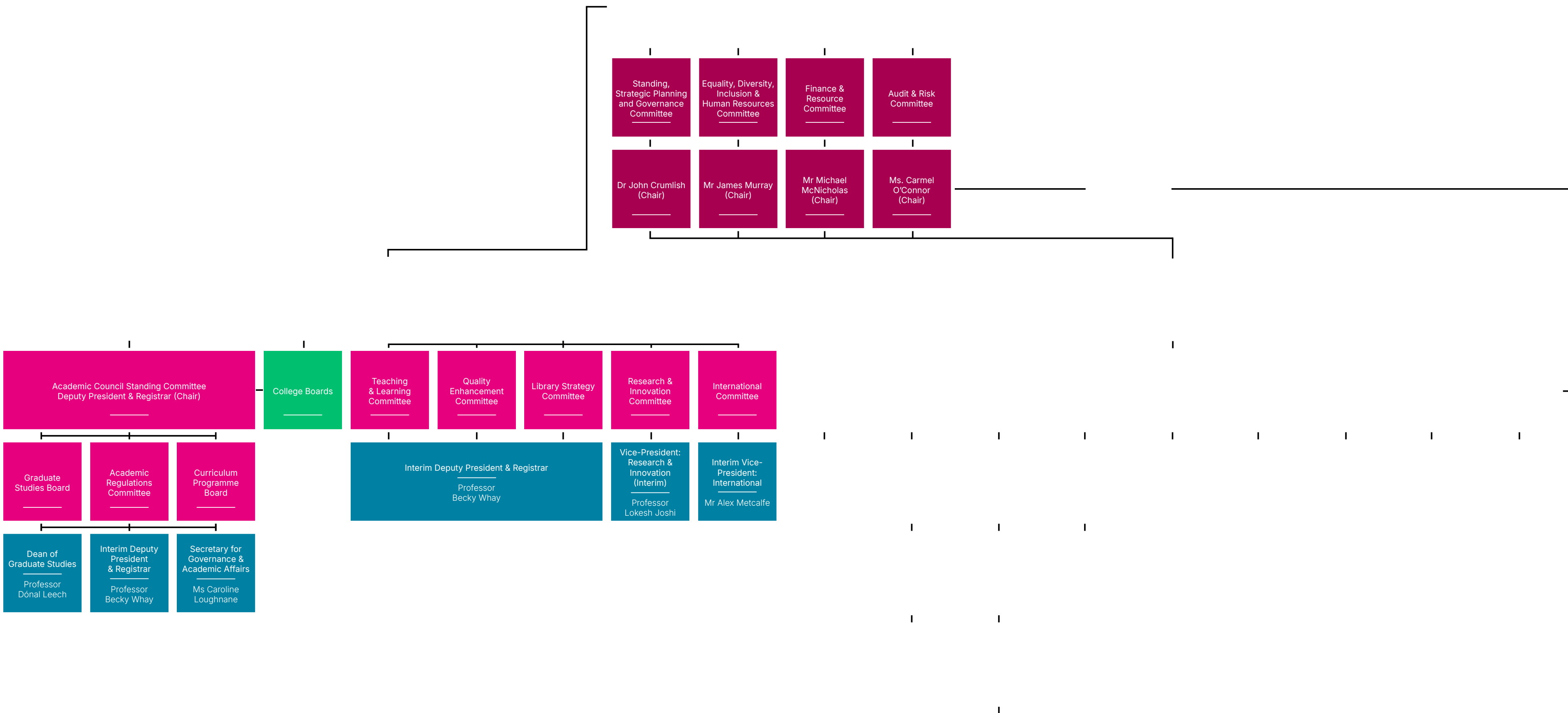
Responsible for Student Services, Sports & Physical Wellbeing, Universal Design, and the University's Student Success Strategy.

The Dean is also Disciplinary Officer and Complaints Officer.

Direct Reports/ Heads of Areas

- Director of Student Services
- Director of Sport and Physical Wellbeing
- Student Success Manager
- Universal Design Manager

Organisational Chart



Secretary for Governance & Academic Affairs

Areas of Responsibility

Responsibility for all matters relating to the implementation of good corporate and academic governance in the University.

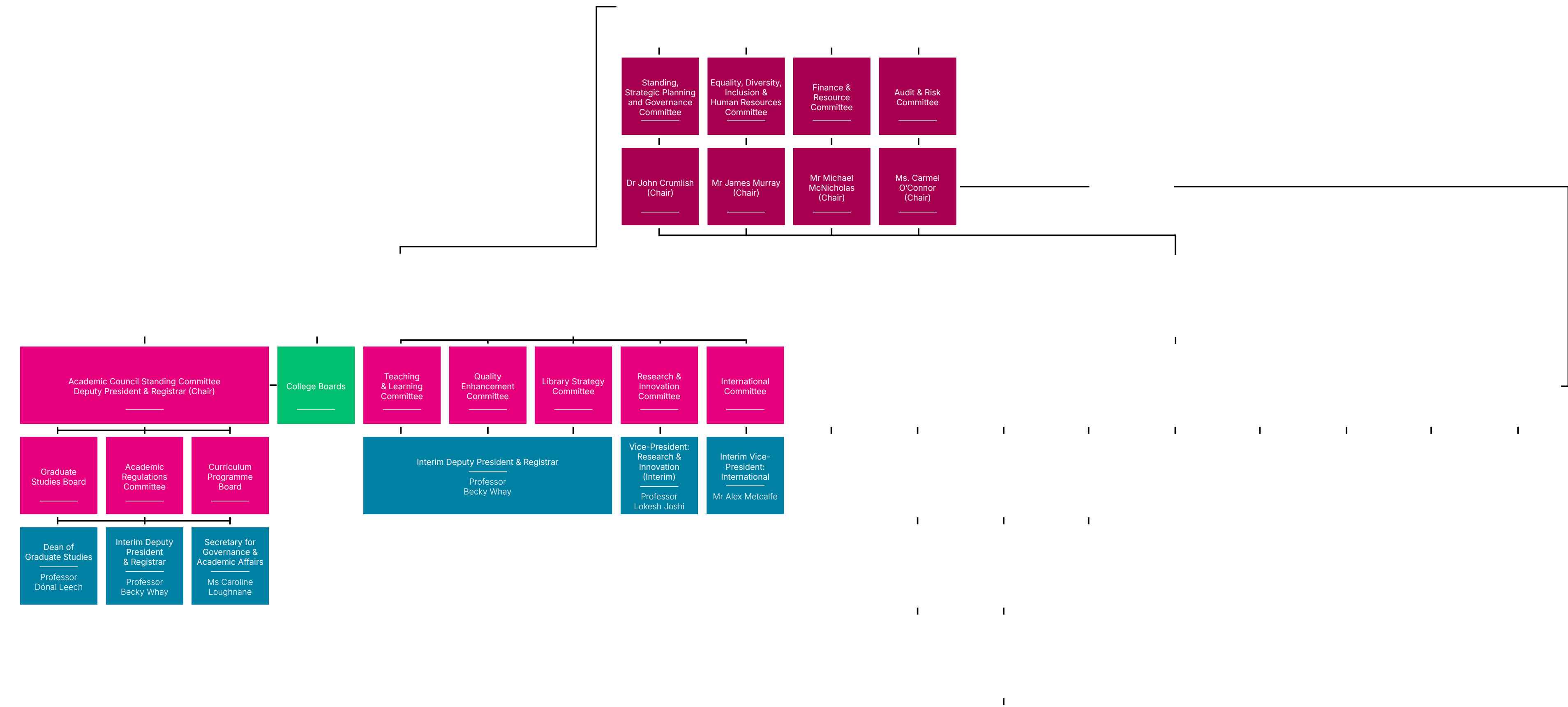
Secretary to the University's Governing Authority
and its Academic Council.

In addition, executive responsibility for the following areas: Registry; Student Recruitment and Outreach; Institutional Research and Planning; Academic Affairs and Planning.

Direct Reports/ Heads of Areas

- Director of Registry
- Head of Academic Affairs and Policy
- Head of Academic Planning
- Director of Governance
- Director of Institutional Research and Planning
- Director of Student Recruitment and Outreach

Organisational Chart



Bursar / Chief Financial Officer

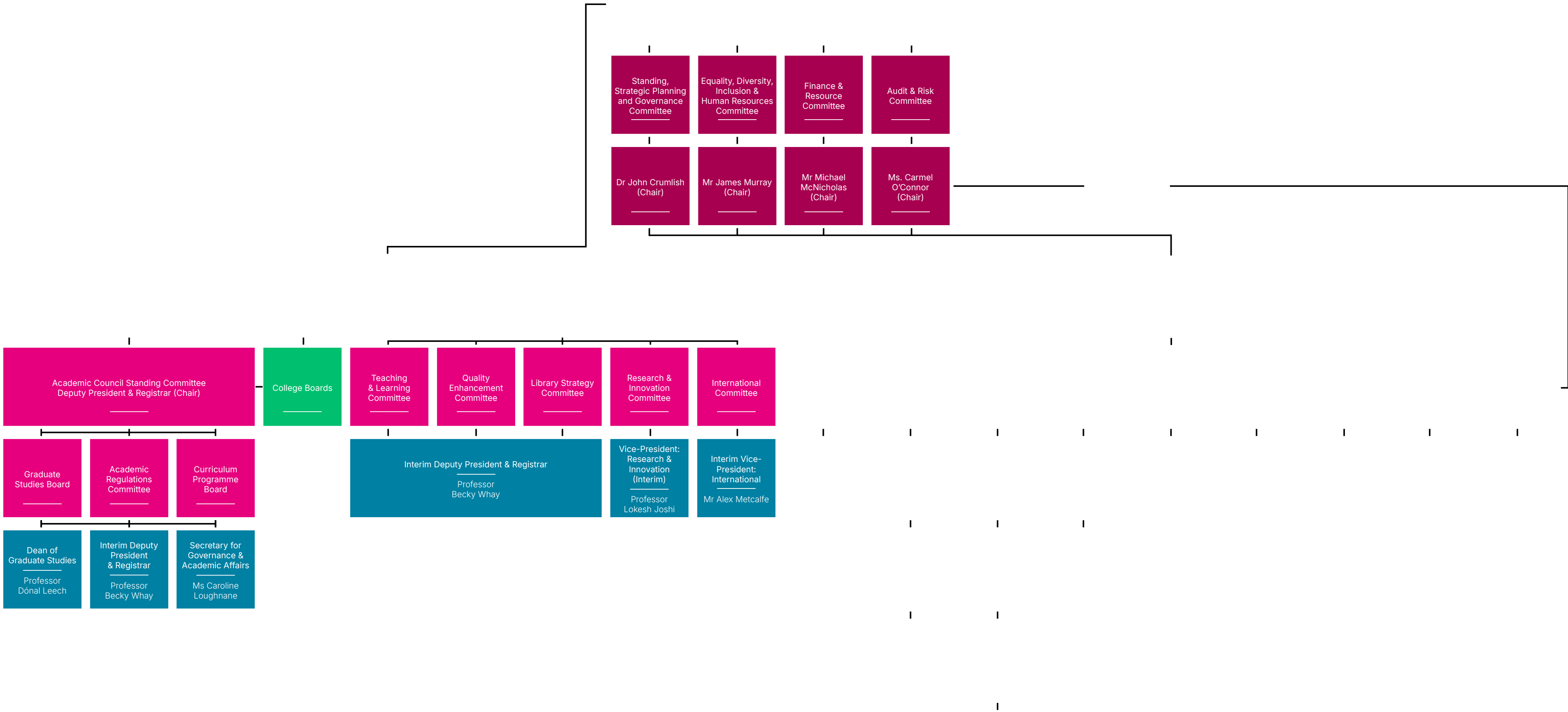
Areas of Responsibility

Responsibility for the overall financial planning, management and reporting of the University.

Direct Reports/ Heads of Areas

- Director of Financial Accounting
- Financial Planning Unit
- Director of Research Accounting
- Office Manager
- Bursar's Accountant

Organisational Chart



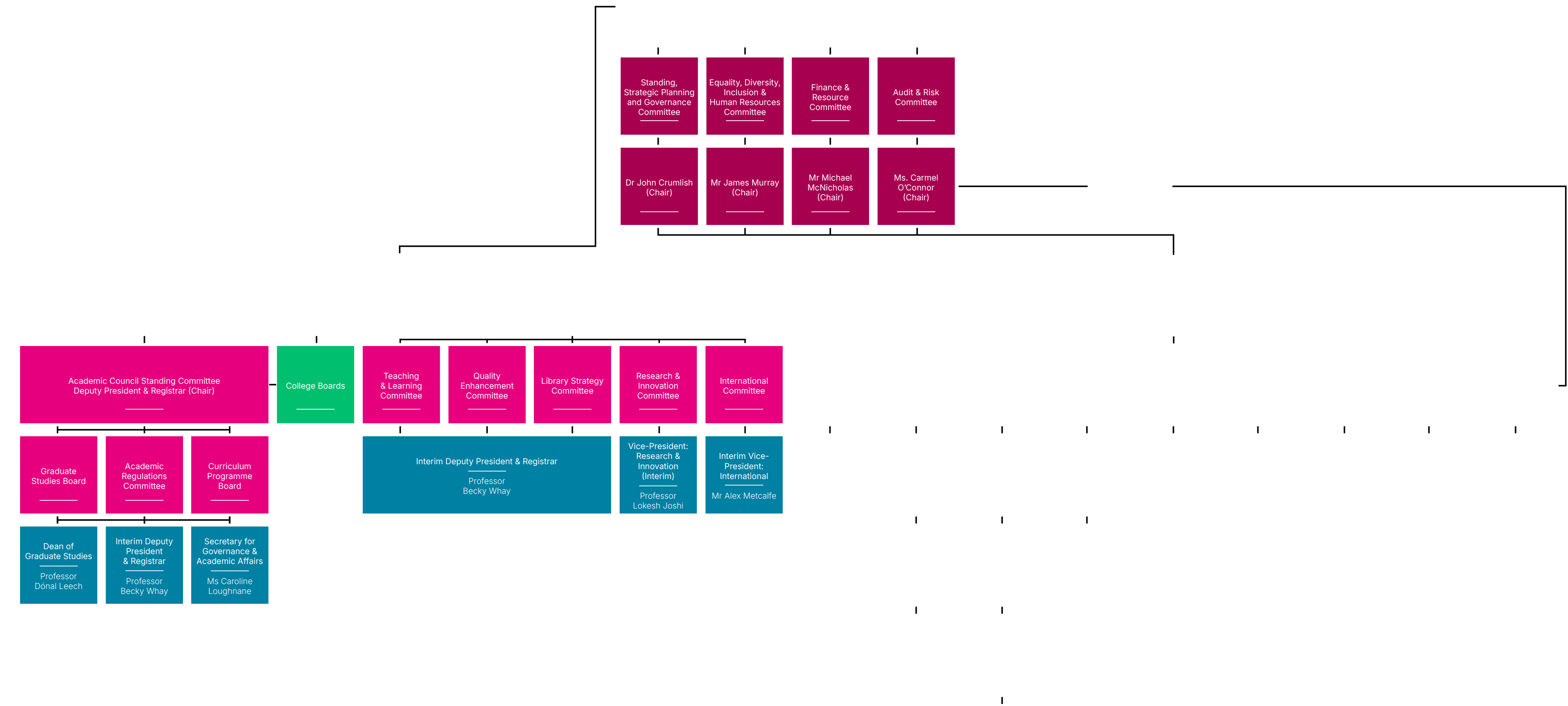
Chief Operating Officer

Areas of Responsibility

John Gill is the Chief Operating Officer (COO) at University of Galway and, with his team, is responsible for ensuring that the University's core work of teaching, learning and research is supported as effectively, efficiently and economically as possible, in line with the strategic plan of the University. Reporting to the President, the COO is a member of the University Management Team and has strategic management responsibility for the following key services—

- [Buildings and Estates](#)
- [Business Continuity Management](#)
- [Commercial Services](#)
- [Compliance: Health & Safety and Procurement & Contracts](#)
- [Corporate and Legal Affairs](#)
- [Information Solutions and Services](#)
- [Insurance Services](#)

Organisational Chart



Executive Dean of the College of Medicine, Nursing & Health Sciences

Areas of Responsibility

Overall responsibility for building high
Responsible for providing leadership and
strategic direction to the College's teaching,
research, outreach and societal impact activities,
and for ensuring that it achieves its academic
and financial objectives.

Direct Reports/ Heads of Areas

- College Director of Strategic Development

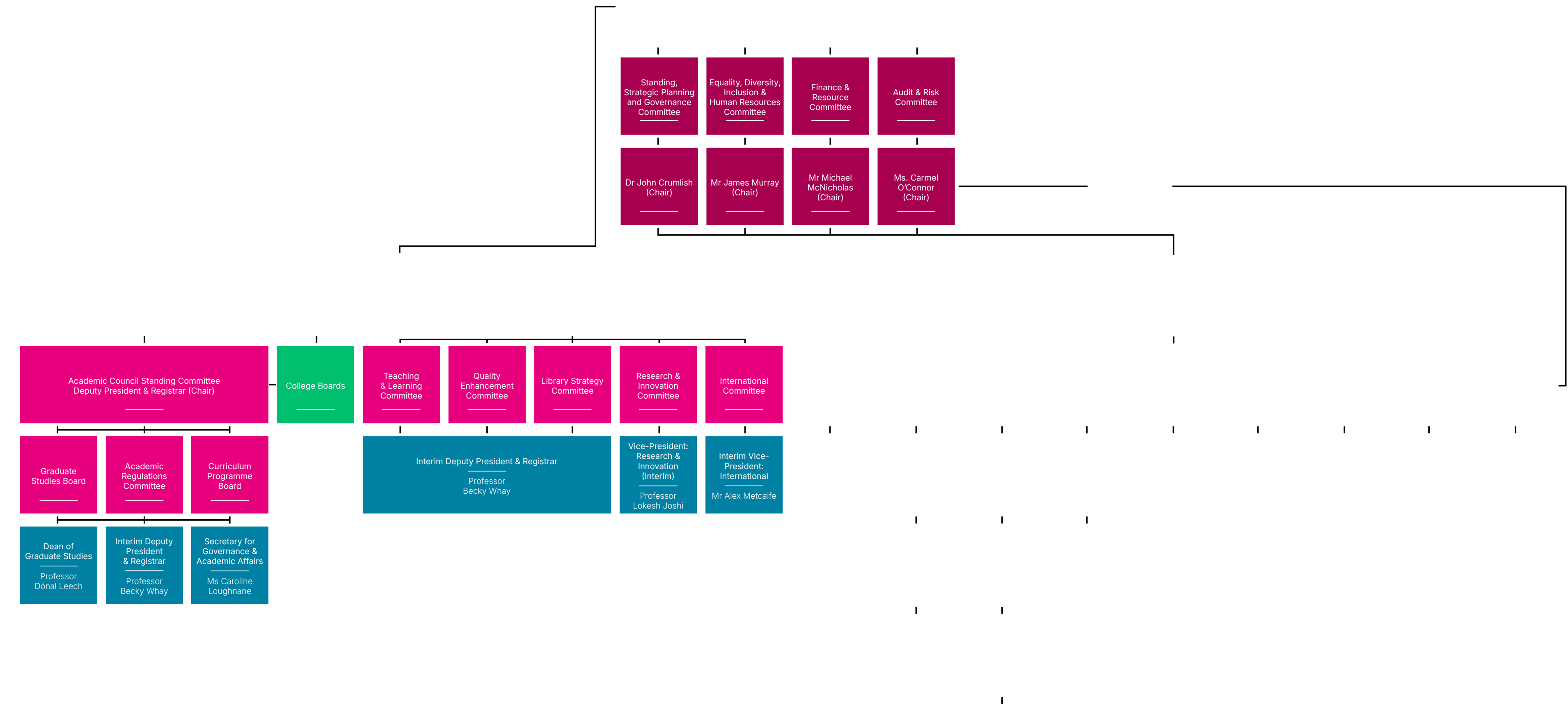
Heads of School

- Head of School of Health Sciences
- Head of School of Medicine
- Head of School of Nursing and Midwifery

Vice-Deans

- Deputy Vice-Dean
- Vice-Dean for Research
- Vice-Dean for Learning, Teaching and Assessment
- Vice-Dean for Graduate Studies
- Vice-Dean for Internationalisation
- Vice-Dean for Equality, Diversity and Wellbeing
- Vice-Dean for Civic Engagement

Organisational Chart



Executive Dean of the College of Medicine, Nursing & Health Sciences

Areas of Responsibility

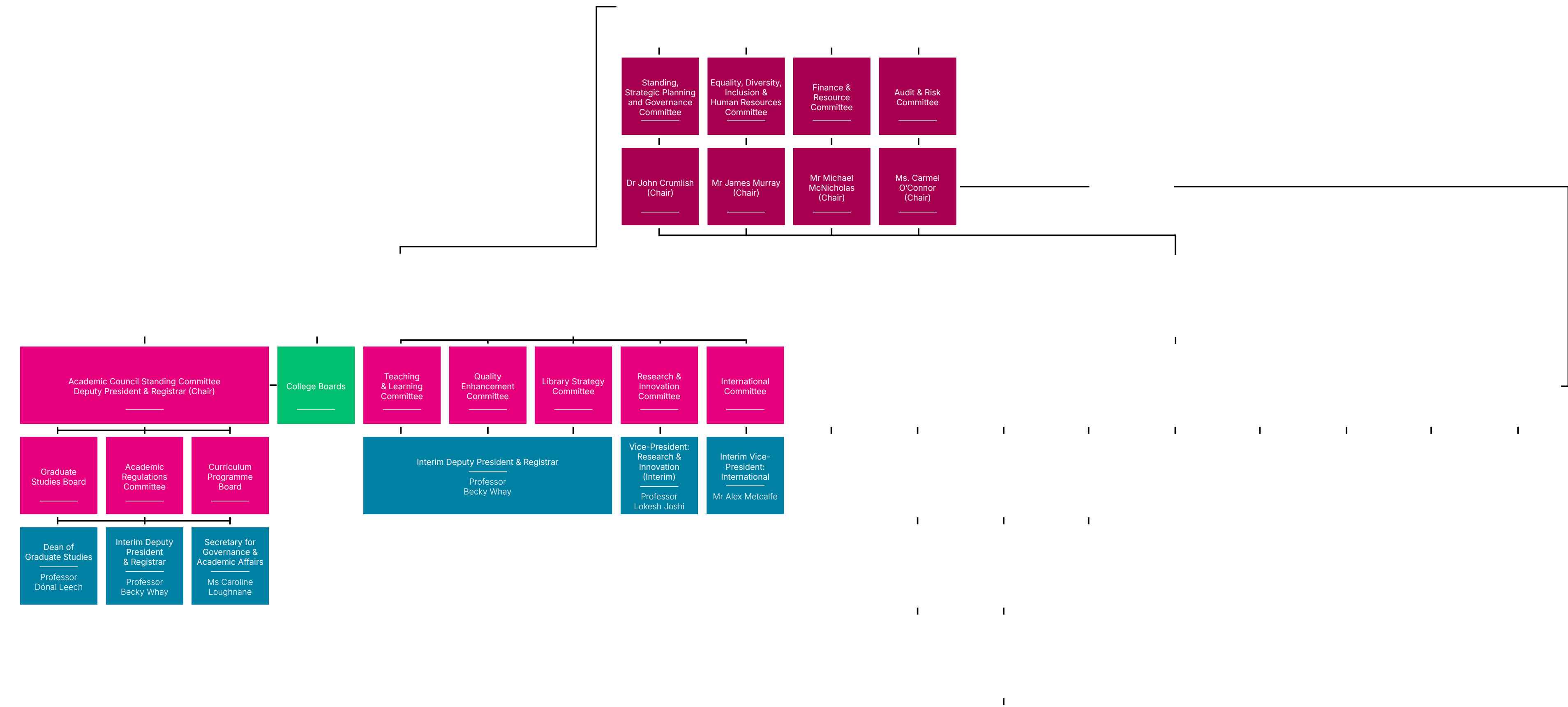
Overall responsibility for building high
Responsible for providing leadership and
strategic direction to the College's teaching,
research, outreach and societal impact activities,
and for ensuring that it achieves its academic
and financial objectives.

Direct Reports/ Heads of Areas

Directors of affiliated Research Institutes

Matters relating to finance; resources and
personnel; risk management and compliance

Organisational Chart



Director of Human Resources

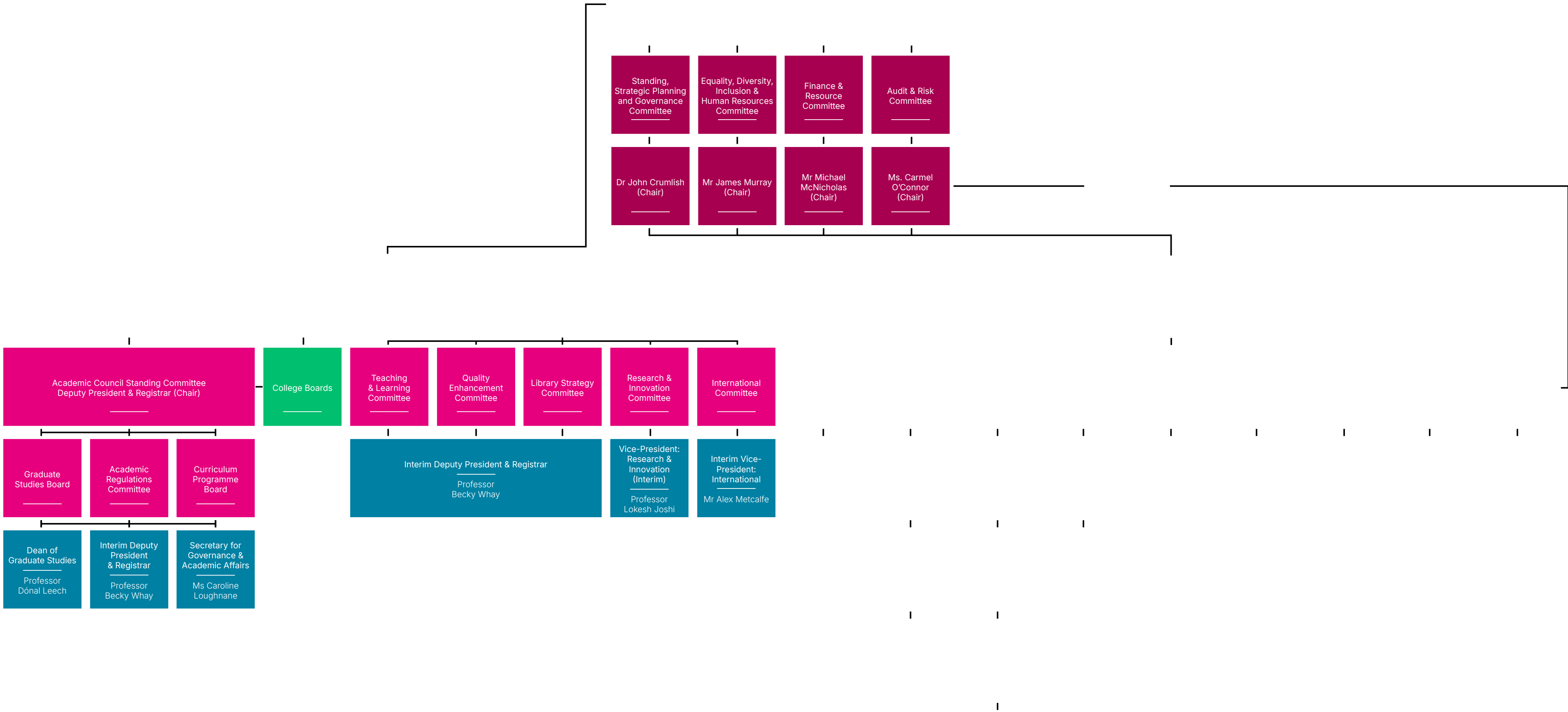
Areas of Responsibility

Responsibility for HR Operations, Employee Relations, Recruitment, Staff Development, Staff wellbeing, Promotion / Progression implementation and the development and implementation of a new People Strategy

Direct Reports/ Heads of Areas

- Assistant Director of Human Resources
- Assistant Director of Human Resources Operations
- Assistant Director of Human Resources Development & Strategy
- Head of Change & Organisation development
- Director of Human Resources Office Business Manager
- Personal Assistant to the Director of Human Resources

Organisational Chart



Vice-President for Research & Innovation

Areas of Responsibility

Responsibility for advancing the research and innovation strategy and mission of the university.

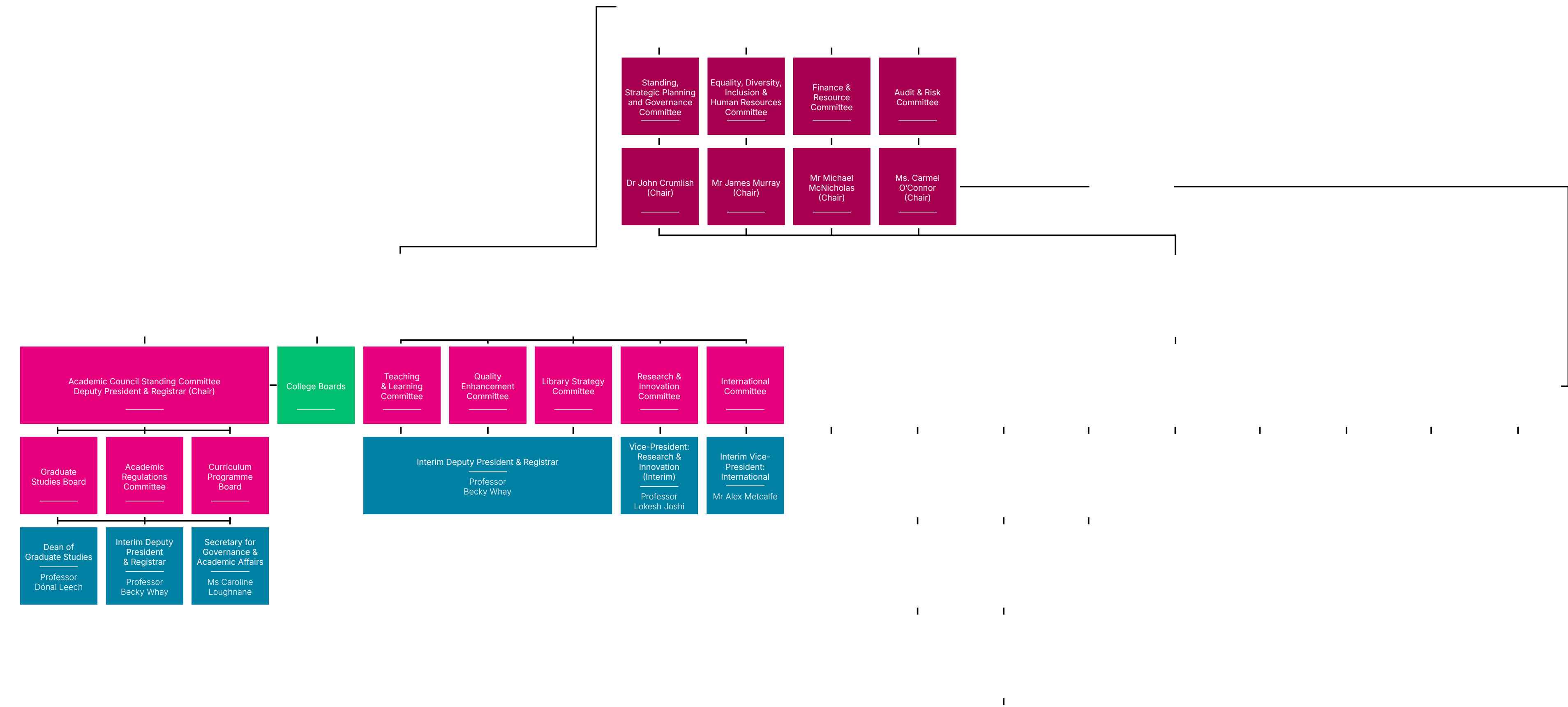
Overall leadership of four core units; Research Office, Innovation Office, Graduate Studies Office and Clinical Research Development Office supporting and enabling the University's research and innovation remit.

Chair of the university Research Committee - a Sub-Committee of Academic Council.

Direct Reports/ Heads of Areas

- Dean of Graduate Studies
- Director of Research
- Director of Technology Transfer and Innovation
- Directors of the University's affiliated Research Institutes - in relation to the strategic direction and development of the Institute's research activity; compliance with University and national policies with respect to research and innovation; and responsibilities to external funding agencies.
- Head of the Researcher Development Centre (dual reporting line to Dean of Graduate Studies)
- Head of Clinical Research Development Office (Director of Clinical Research) - dual reporting line to Regional Health Authority Group Clinical Director

Organisational Chart



Dean of Graduate Studies

Areas of Responsibility

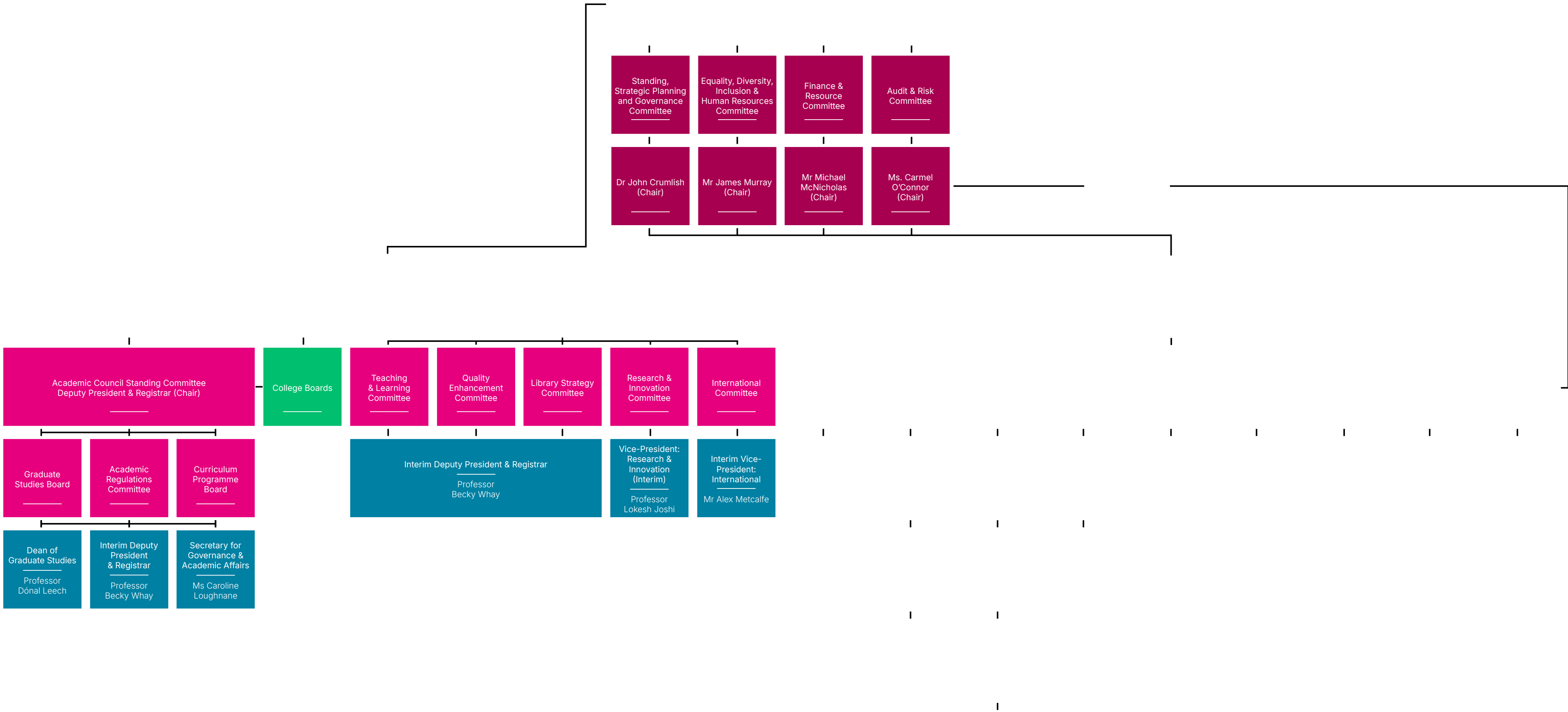
Responsibility for the overall management of the operation of University postgraduate research programmes.

As chair of the Graduate Studies Board the Dean plays a central role in approval of new postgraduate research programmes and initiatives and in setting, and monitoring implementation of, the regulations and policy governing research degrees.

Direct Reports/ Heads of Areas

- Director of Graduate Studies
- Head of the Researcher Development Centre (dual reporting line to Vice- President: Research & Innovation

Organisational Chart



Vice-President: Marketing, Communications & Engagement

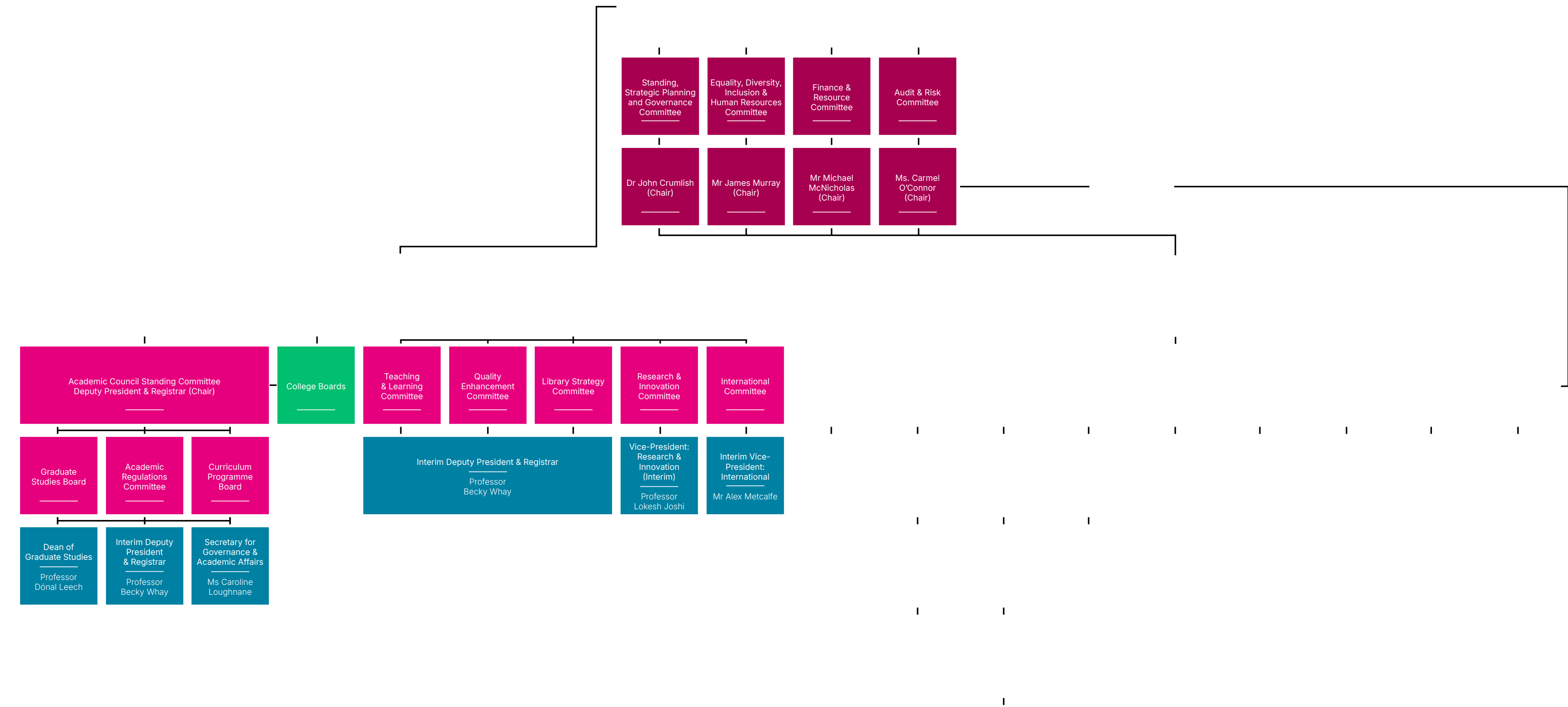
Areas of Responsibility

Responsibility for leading the University's strategic external relations and communications, philanthropic engagement and fundraising.

Direct Reports/ Heads of Areas

- Director of Marketing and Communications
- Head of Content
- Head of Engagement
- Director of Administration and Finance/ Board Secretary for Galway University Foundation
- Internal Communications Officer
- Regional Skills Advisor

Organisational Chart



Vice-President: International

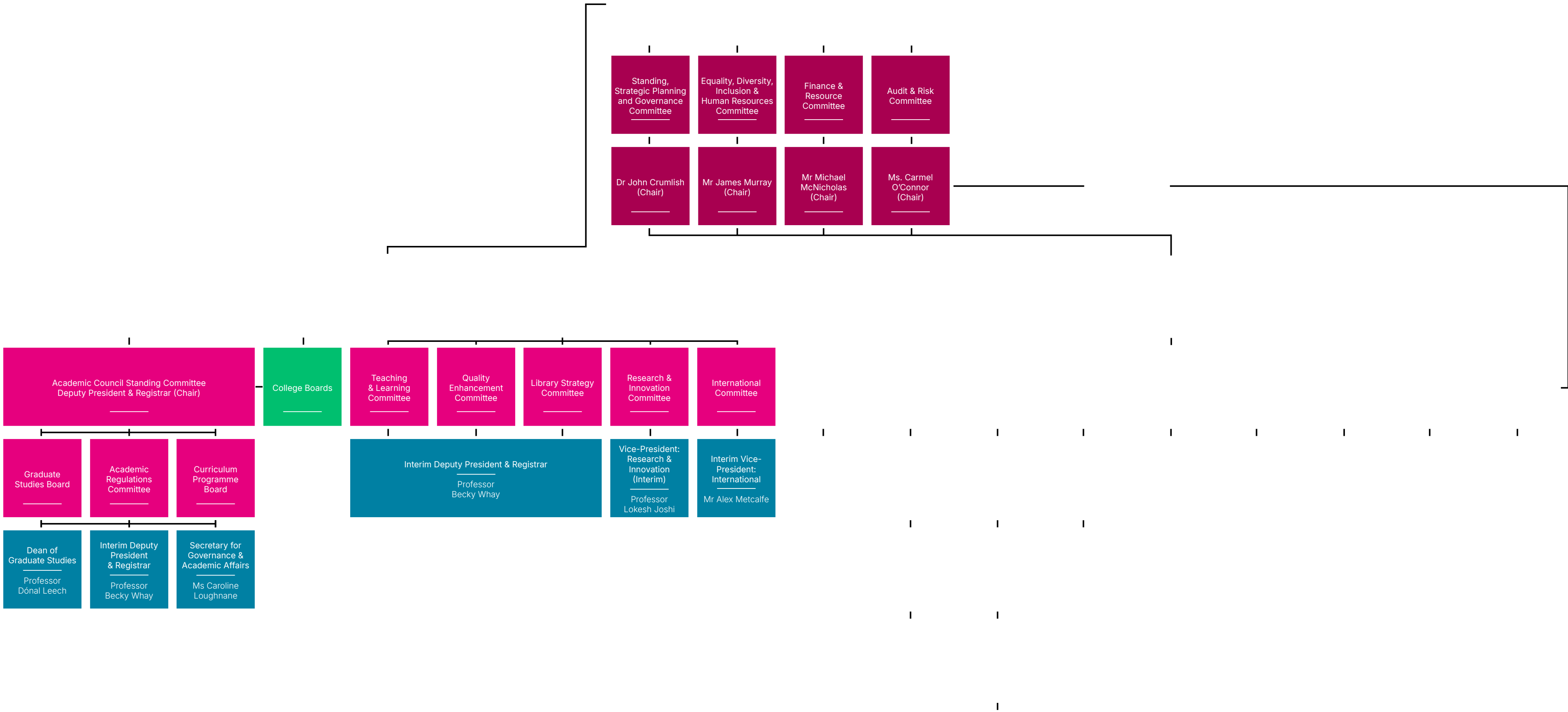
Areas of Responsibility

Responsibility for the development and execution of the University's internationalisation strategy, leading the Global Galway project, and for University of Galway's participation in the ENLIGHT network of European Universities.

Direct Reports/ Heads of Areas

- Director of Internationalisation
- ENLIGHT Project Manager

Organisational Chart



Vice-President: Equality, Diversity & Inclusion

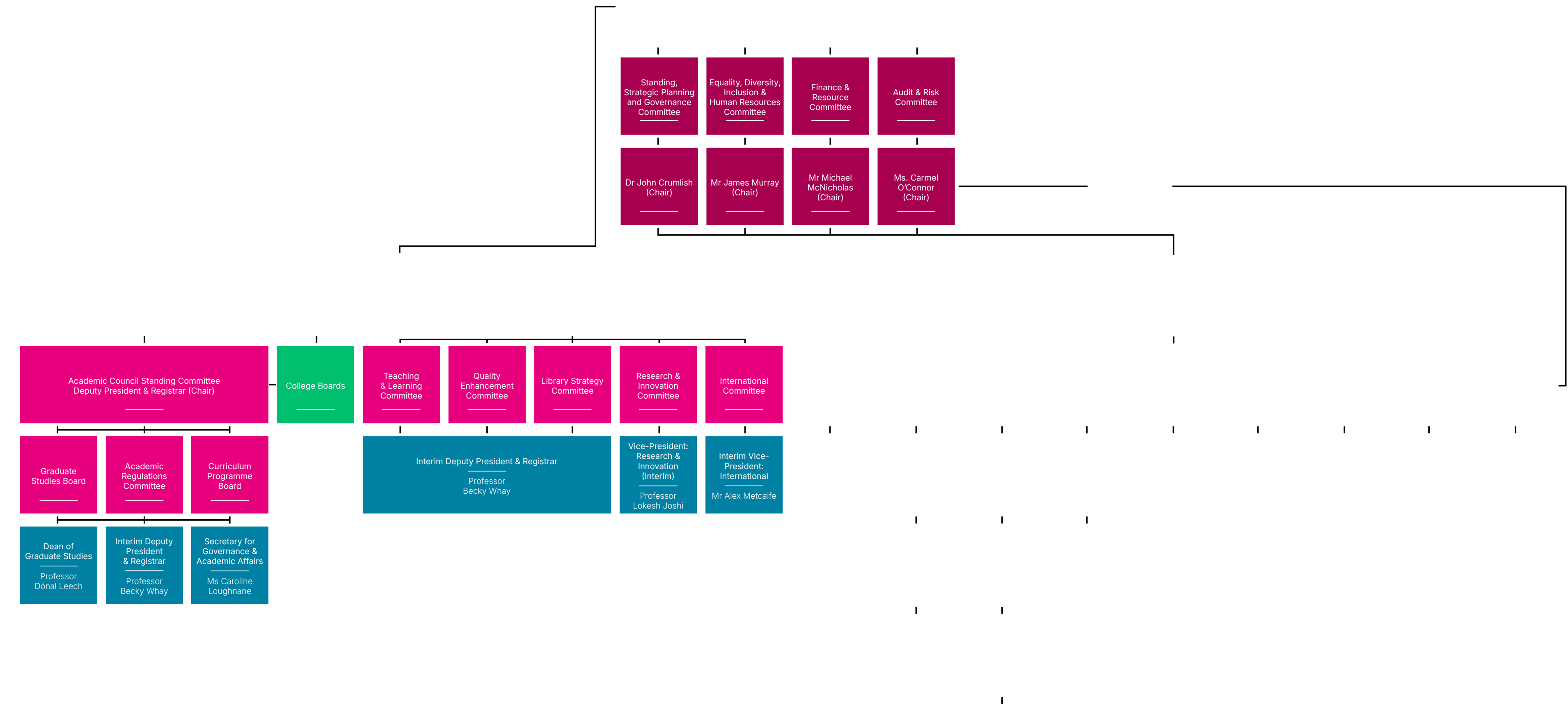
Areas of Responsibility

Overall responsibility for leading and promoting all aspects of equality, diversity and inclusion throughout the University.

Direct Reports/ Heads of Areas

- Head of Equality, Diversity & Inclusion
- Sexual Violence Prevention and Response Manager
- Equality Administrator
- EDI Programme Manager for Gender Equality
- EDI Programme Manager for Race Equality
- EDI Data Manager

Organisational Chart



Executive Dean of the College of Science & Engineering

Areas of Responsibility

Responsible for providing leadership and strategic direction to the College's teaching, research, outreach and societal impact activities, and for ensuring that it achieves its academic and financial objectives.

Direct Reports/ Heads of Areas

- College Director of Strategic Development
- Technical Superintendent (on health and safety)

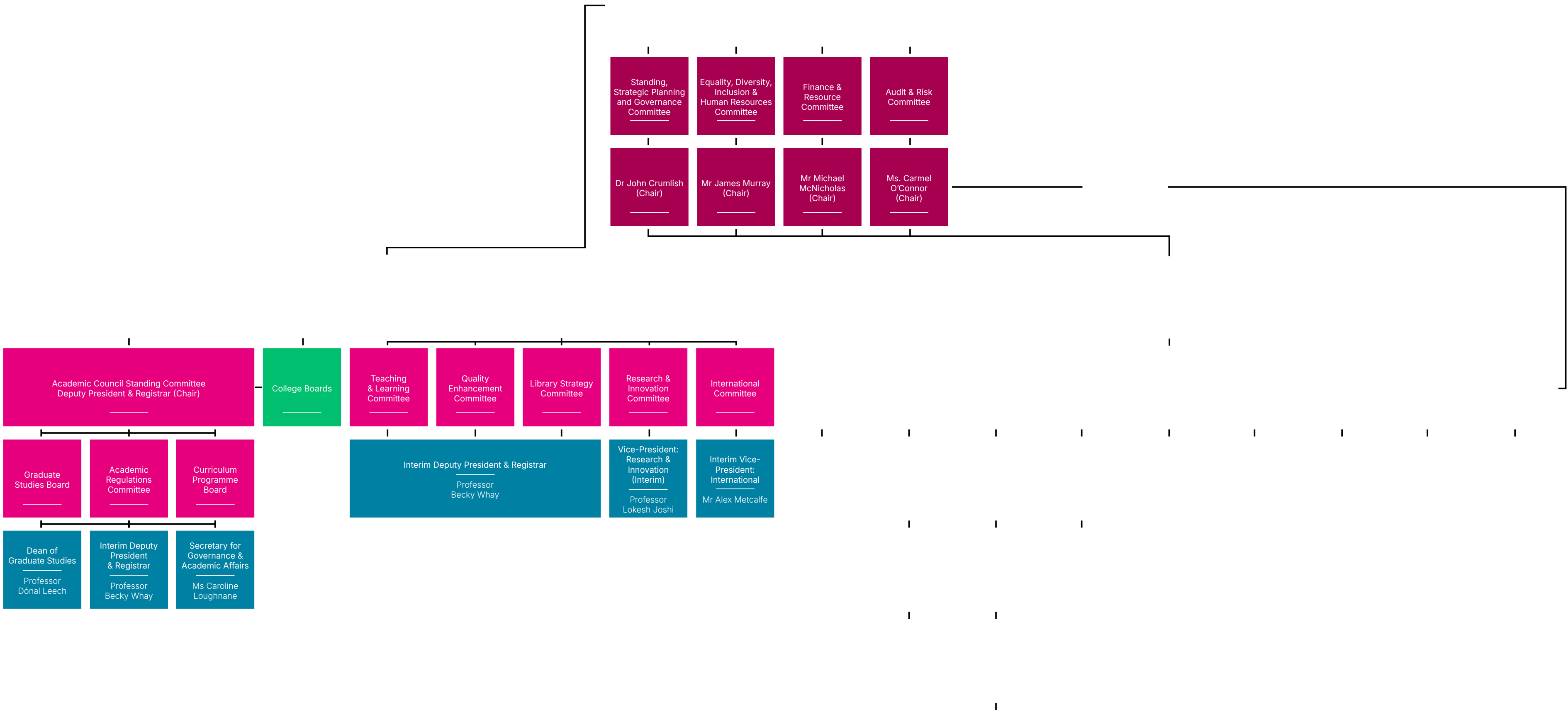
Heads of School

- Head of School of Biological and Chemical Sciences
- Head of School of Mathematical & Statistical Sciences
- Head of School of Natural Sciences
- Head of School of Engineering
- Head of School of Computer Science

Vice-Deans

- Vice-Dean for Internationalisation
- Vice-Dean for Student Recruitment and Public Engagement
- Vice-Dean for Equality, Diversity and Inclusion

Organisational Chart



Executive Dean of the College of Science & Engineering

Areas of Responsibility

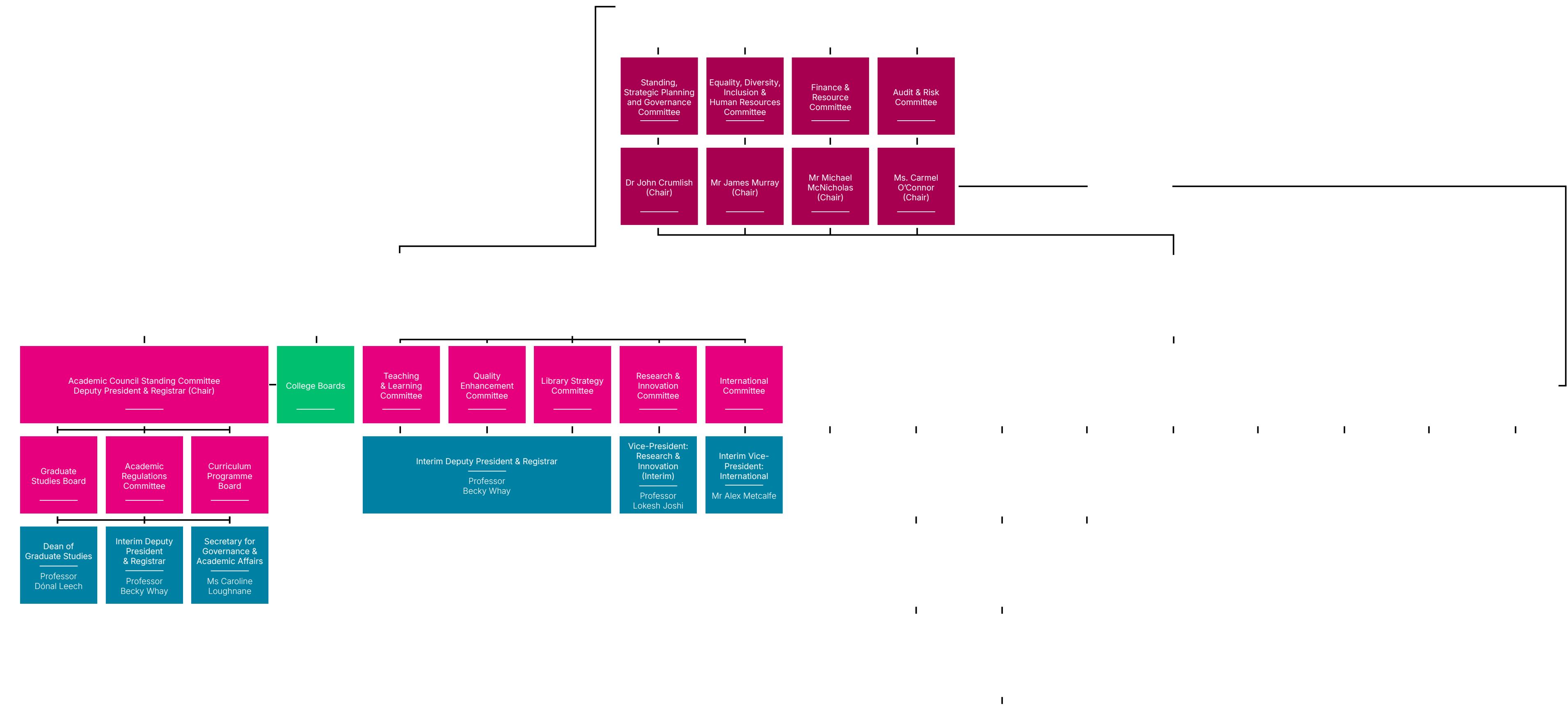
Responsible for providing leadership and strategic direction to the College's teaching, research, outreach and societal impact activities, and for ensuring that it achieves its academic and financial objectives.

Direct Reports/ Heads of Areas

Directors of affiliated Research Institutes

- Director of ICHEC
- Director of Data Science Institute
- Director of Institute for Health Discovery and Innovation
- Director of Ryan Institutes

Organisational Chart



Executive Dean of the College of Business, Public Policy & Law

Areas of Responsibility

Responsible for providing leadership and strategic direction to the College's teaching, research, outreach and societal impact activities, and for ensuring that it achieves its academic and financial objectives.

Direct Reports/ Heads of Areas

- College Director of Strategic Development

Heads of School

- Head of J.E. Cairnes School of Business & Economics
- Head of School of Law
- Head of Shannon College of Hotel Management

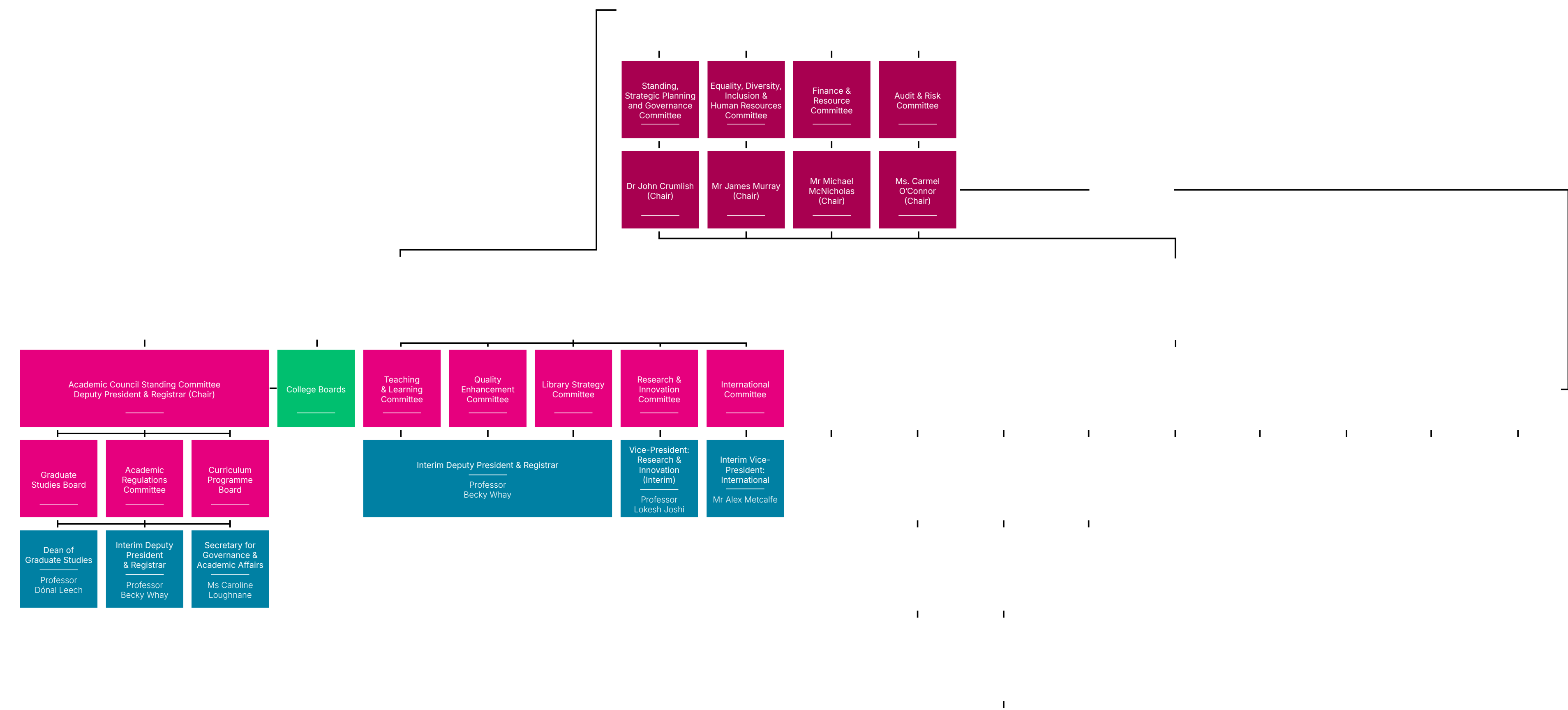
Vice-Deans

- Vice-Dean for Equality, Diversity and Inclusion
- Vice-Dean for Graduate Studies
- Vice-Dean for Internationalisation
- Vice-Dean for Teaching and Learning
- Vice-Dean for Research

Directors of affiliated Research Institutes

Matters relating to finance; resources and personnel; risk management and compliance.

Organisational Chart



Executive Dean of the College of Arts, Social Sciences and Celtic Studies

Areas of Responsibility

Responsible for providing leadership and strategic direction to the College's teaching, research, outreach and societal impact activities, and for ensuring that it achieves its academic and financial objectives.

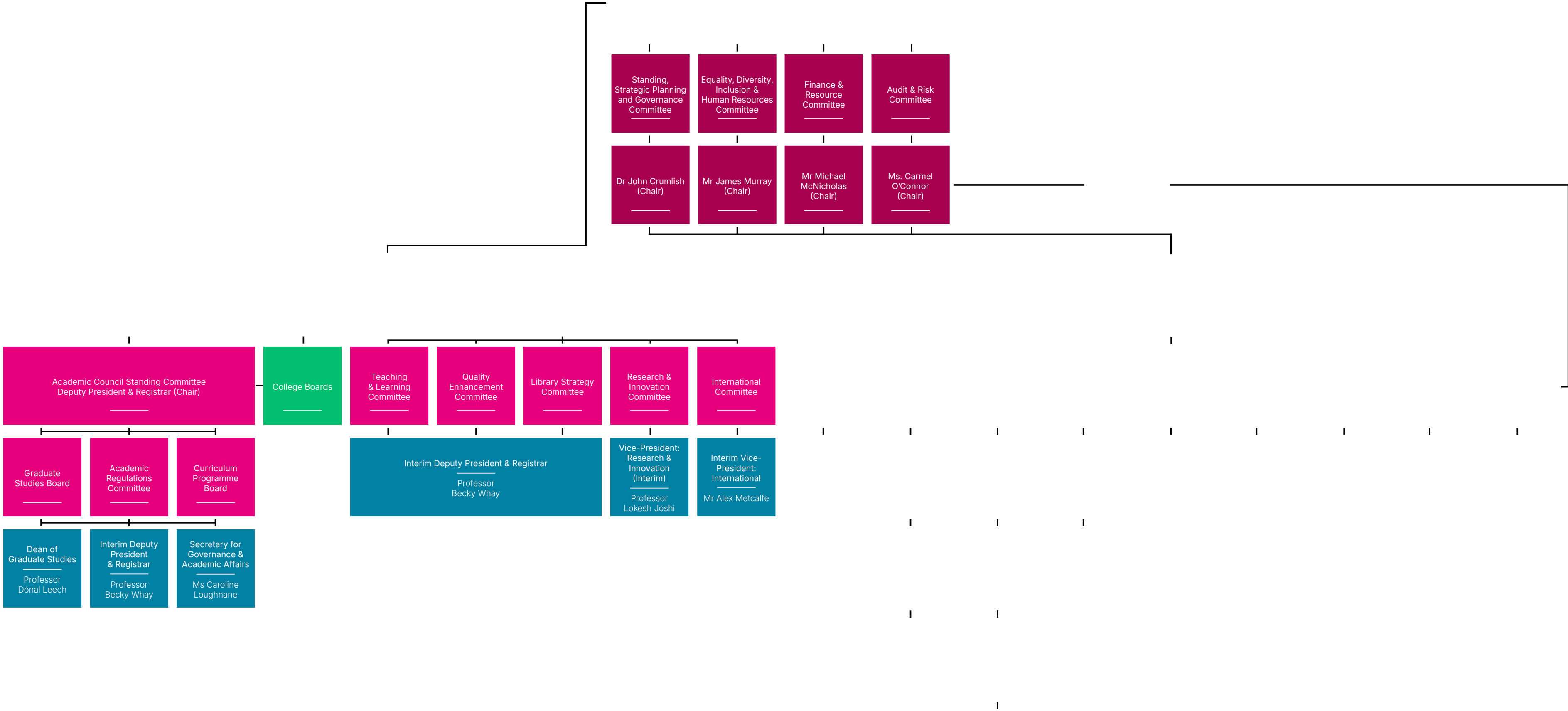
Direct Reports/ Heads of Areas

- College Director of Strategic Development

Heads of School

- Head of School of Education
- Head of School of English, Media and Creative Arts
- Head of School of Geography, Archaeology and Irish Studies
- Head of School of History and Philosophy
- Head of School of Languages, Literatures and Cultures
- Head of School of Political Science and Sociology
- Head of School of Psychology
- Head of Acadamh na hOllscolaíochta Gaeilge

Organisational Chart



Executive Dean of the College of Arts, Social Sciences and Celtic Studies

Areas of Responsibility

Responsible for providing leadership and strategic direction to the College's teaching, research, outreach and societal impact activities, and for ensuring that it achieves its academic and financial objectives.

Direct Reports/ Heads of Areas

Vice-Deans

- Vice-Dean for Education
- Vice-Dean for Equality, Diversity and Inclusion
- Vice-Dean for Global Engagement
- Vice-Dean for Research and Innovation
- Vice-Dean for Student Experience

